

Intelligent Valve Positioner SRD991

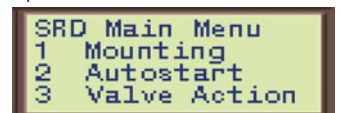


SRD991 – Intelligent Control and User Friendly.

- Easy to operate, menu-driven graphical LCD
- Multilingual full text display, visible also with cover closed
- All parameters can be configured locally by push buttons
- Status and diagnostic messages displayed in LCD
- Advanced Diagnostics for Valve predictive maintenance
- Premium Diagnostics for Valve Signatures, On-Line Friction, ...
- Suitable for safety applications up to SIL 3
- Partial Stroke Test (PST) for Emergency Shutdown applications
- HART-Protocol with only 420 Ohms load
- PROFIBUS-PA acc. to IEC 1158-2 based on FISCO
- FOUNDATION Fieldbus H1 acc. to IEC 1158-2 based on FISCO with PID, AO, 2xDI, DO function blocks and LAS functionality
- Infrared Interface for wireless communication
- Easy mounting to all linear and rotary actuators
- Options:
 - Housing in stainless steel
 - Limit switches and position transmitter
 - Gauge manifolds and volume boosters
 - Pressure sensors for supply air and outputs



Operation

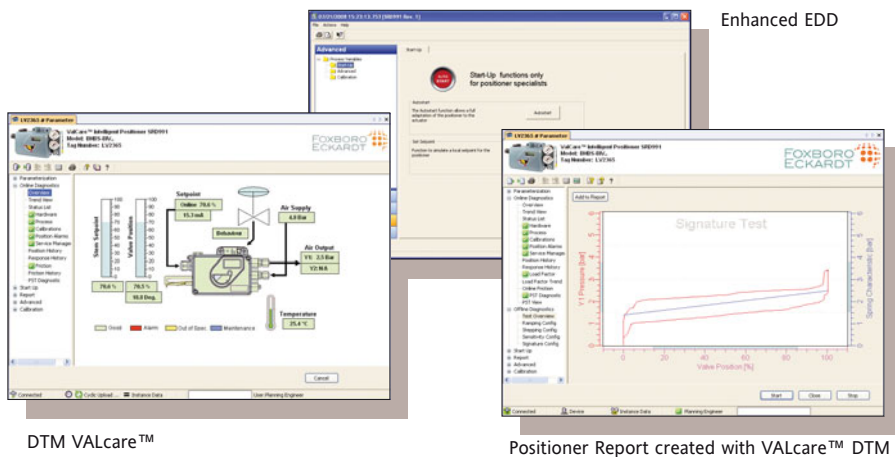


Configuration

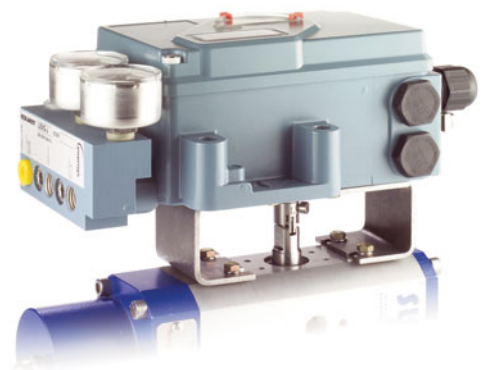


Diagnosis report





Enhanced EDD



Example for mounting on rotary actuators.

DTM VALcare™

Positioner Report created with VALcare™ DTM

Technical Data

The SRD991 offers the most advanced technology available on the market today.

This includes among others an infrared interface for wireless operation and configuration, a multi-lingual full-text graphic LCD and an availability with the choice of all in the process automation applied communication protocols. It offers enhanced applications and methods to analyze recorded stroke data.

All the diagnostics features can be easily configured and display by the Positioner DTM (VALcare). Moreover, the Positioner DTM enables to edit a complete "health" report of the valve with all data of configuration and diagnostics.

The SRD991 has also the capability to control a Partial Stroke Test (PST) that offers operators a tool to identify the trouble-proof function of ESD (Emergency Shut Down) valves.

Advanced Diagnostics		<ul style="list-style-type: none"> • Autostart • Autodiagnostic • Alarm Output for Switching (with Optionboard) • Status List acc. NE107 • Response History 	<ul style="list-style-type: none"> • Custom Characterization • Alarm Management • Position History
Premium Diagnostics		<ul style="list-style-type: none"> • On Line Friction • Ramping Signature • Valve Signature • PST Predictive Maintenance 	<ul style="list-style-type: none"> • Stepping Signature • Sensitivity Signature • PST
SRD991	without Communication	Setpoint 4-20 mA Load 300 Ohms	
	with Communication	HART Setpoint 4-20 mA Load 420 Ohms PROFIBUS PA and FOUNDATION Fieldbus H1 Base current 10.5 mA ± 0.5 mA + FISCO FDE (Fault Disconnection Electronic) FoxCom Digital certified DTMs for HART, Profibus PA and FF H1	
Display		Multilingual Graphical LCD with full text display LEDs Mechanical Indicator (Standard)	
Air Supply		1.4 to 6 bar (20 to 90 psig), or 1.4 to 7 bar (20 to 105 psig) high air capacity version	
Stroke Range		8 to 260 mm (0.3 to 10.2 in) with standard lever	
Angle of Rotation		up to 95 degree angle (optional up to 300 degree)	
Protection Class		IP 65 (IP 66 on request), NEMA 4X	
Electrical Classification	ATEX	"Intrinsic safety" II 2 G EEx ia IIC T4 / T6 "intrinsic safety for dust" II 1 D Ex iaD 20	
	FM / CSA	"Intrinsic safety" Class I, Div. 1, Groups A, B, C, D	
Electrical Connection		M20 x 1.5 or 1/2-14 NPT (others with Adapter AD...)	
Pneumatic Connection		G1/4 or 1/4-18 NPT	
Ambient Temperature		-40 to +80 °C (-40 to +176 °F)	
Weight		1.7 kg / 3.7 lbs (double acting: 2 kg / 4.4 lbs)	
Optional Features (plug & play)		Inductive Limit Switches (2- or 3-wire) Mechanical Switches (Micro Switches) Position Transmitter (4 to 20 mA) Binary Inputs or Binary Outputs or Binary Inputs/Outputs dedicated to SIS logic solvers* External potentiometer (*e.g. TRICONEX)	
Attachment to linear actuators		acc. to IEC 534 part 6 (NAMUR) and VDI/VDE 3847	
rotary actuators		acc. to VDI/VDE 3845 and VDI/VDE 3847	
any other linear or rotary actuator by means of extensive attachment kit offering			

FOXBORO ECKARDT GmbH
 Pragstrasse 82
 D-70376 Stuttgart · Germany
 Fon +49 (0)711 502-0
 Fax +49 (0)711 502-597
<http://www.foxboro-eckardt.com>
 e-mail sale-support@foxboro-eckardt.de